

Loddon Campaspe Regional Partnership

At a glance

Our story so far

Since 2016, the Loddon Campaspe Regional Partnership has been listening to the voices of our community and to stakeholders from across our region.

Through three widely-attended Regional Assemblies and numerous smaller meetings across the region, the Partnership has heard what is important to people in Loddon Campaspe and it has taken these voices directly to Government.

Government has listened and, as a result of the Partnership's efforts, a range of projects have been funded.

For example, the Partnership's Healthy Heart of Victoria initiative, funded by the Victorian Government with \$5 million in Budget 2018/ 19, is helping encourage more people in Loddon Campaspe to be more active, more often, including by funding infrastructure and activation projects, such as a new Park Run in Maryborough.

But the Partnership has achieved much more than simply winning funding.

It has also played an important role in bringing together diverse groups, as well as stakeholders from across governments, departments and sectors, to work together to address issues facing our region.

It has led to a focus on local issues and Government policies, and their impact, at the local place-based level.



REGIONAL PARTNERSHIPS LODDON CAMPASPE

The outcomes we are striving to achieve

Our region is striving to achieve the following long term social, economic and environmental outcomes for the individuals, families and communities who live in and visit the region. The roadmap overleaf outlines the challenges we face in achieving these outcomes, the actions we are taking and what success looks like for our region.

Our Outcomes Roadmap

- A Growing Economy**
A strong, diverse economy that enables people to actively contribute to their community
- Healthy Heart of Victoria**
Active communities, healthy settings and productive lives at all stages
- Create the Best Start for Every Child**
Families and communities that give children the best start in life
- Youth our Critical Asset**
Safe, supported and engaged young people
- A Great Environment to Live**
Our culture, heritage and environment is protected and enjoyed
- A Connected Region**
All people in the Loddon Campaspe Region benefit from economic activity and access to services

Our region in central Victoria covers an area with a diverse population and a buoyant economy based on agriculture, health, professional services, education and manufacturing. Bendigo, one of Victoria's largest and fastest growing regional cities, lies at the heart of the region and is a prosperous and vibrant hub of cultural and economic activity. This vibrancy is based on growing partnerships, deeper understanding and recognition of our Traditional Owners and appreciation of natural assets.

Our region includes:

- Six municipalities - Campaspe Shire, Central Goldfields Shire, City of Greater Bendigo, Loddon Shire, Macedon Ranges Shire, Mount Alexander Shire
- A Gross Regional Product of \$10.3 billion
- A population of 228,400
- More than 9% of people born overseas

Loddon Campaspe Regional Partnership – 2018 (current as of 17 May 2019)

This roadmap reflects the views of the Loddon Campaspe Regional Partnership. The roadmap is a living document that will be updated regularly by the Regional Partnership.

Our priorities

Early in 2019, after hearing from hundreds of people from across our community, the Partnership published its first Outcomes Roadmap – a summary of the key, long-term strategic areas of focus for the Partnership moving forward.

The Roadmap is a summary of where the Partnership is looking to make a real difference.

The long-term outcomes the Loddon Campaspe Regional Partnership is striving to achieve are:

A Growing Economy - A strong, diverse economy that enables people to actively contribute to their community

Healthy Heart of Victoria - Active communities, healthy settings and productive lives at all stages

Create the Best Start for Every Child - Families and communities that give children the best start in life

Youth Our Critical Asset - Safe, supported and engaged young people

A Great Environment to Live - Our culture, heritage and environment is protected and enjoyed

A Connected Region - All people in the Loddon Campaspe Region benefit from economic activity and access to services



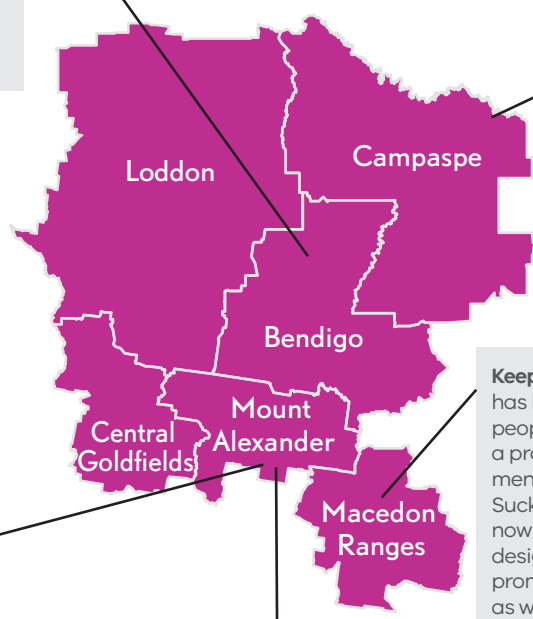
What difference is the Loddon Campaspe Regional Partnership making on the ground?

The Loddon Campaspe Regional Partnership has been involved in driving projects across our region.

This map shows a small selection of initiatives with which the Partnership is involved.

Loddon Campaspe Early Years Language and Literacy Strategy: The Partnership is working with the Department of Education and Training (DET) Loddon Mallee to develop a Loddon Campaspe Early Years Language and Literacy Strategy. It has also piloted a 'Parents as Literacy Champions' project in the township of Heathcote. This project supported parents and caregivers to be their child's first educator.

The Healthy Heart of Victoria initiative: This \$5 million program is getting more people in Loddon Campaspe, more active, more often. The project – supported by the Partnership, the Department of Health and Human Services (DHHS) and the six Loddon Campaspe Local Government Areas (LGAs) - has paid for new infrastructure including a new outdoor basketball court near Dunolly and outdoor gym equipment and lighting at the Kangaroo Flat Browning Street Oval. It is also supporting activation including multicultural lifeguard training, targeting the Karen community. The project has also funded an Active Living Census to determine what our community needs to live an active life.



Walking Together Initiative (Balak Kalik Manya): The Partnership is working with Parks Victoria, the Department of Environment, Land, Water and Planning (DELWP) and Traditional Owners on the Walking Together Initiative which is exploring better ways of interacting, using, and taking care of our national parks so they can be accessible for future generations. The project, which received \$2.1 million in the Victorian Budget 2018/ 19, is operating in the Bendigo and Castlemaine areas.

Keep in Touch (KIT) Initiative: The Partnership has been working with hundreds of young people from across the region to co-design a program to better support young people's mental health. Following six "When Life Sucks" consultations in late 2018, work is now underway on a KIT (Keep in Touch) van, designed by young people, to tour the region promoting a positive mental health message, as well as an App with information on how to locate the KIT Van and a directory of local services young people can access.

Loddon Campaspe Regional Economic Growth Strategy: The Partnership is working with Regional Development Australia to produce a Loddon Campaspe Regional Economic Growth Strategy. As part of this, a **Regional Engineering and Advanced Manufacturing Skills Roadmap** has been written to identify short and long-term initiatives to support future workforce needs in the Engineering and Manufacturing sector.



Hearing from young people at the Loddon Campaspe Regional Assembly 2018

Young people co-design youth mental health initiative in Loddon Campaspe

A specially designed van will soon be out and about visiting the country towns of Loddon Campaspe, thanks to an initiative co-designed by young people in the region.

At Regional Assemblies over the past few years, the Loddon Campaspe Regional Partnership heard from the community about the importance of boosting youth mental health in the region.

Following the 2018 Assembly, the Partnership worked with the Victorian Department of Health and Human Services (DHHS) and the Youth Affairs Council Victoria to run a series of six forums for young people, aged from 12 to 25 who live, work, study or play in the region.

The forums, called "When Life Sucks", attracted around 200 young people who brainstormed what was needed to support youth mental health and build resilience in the region. There was also an opportunity for online input.

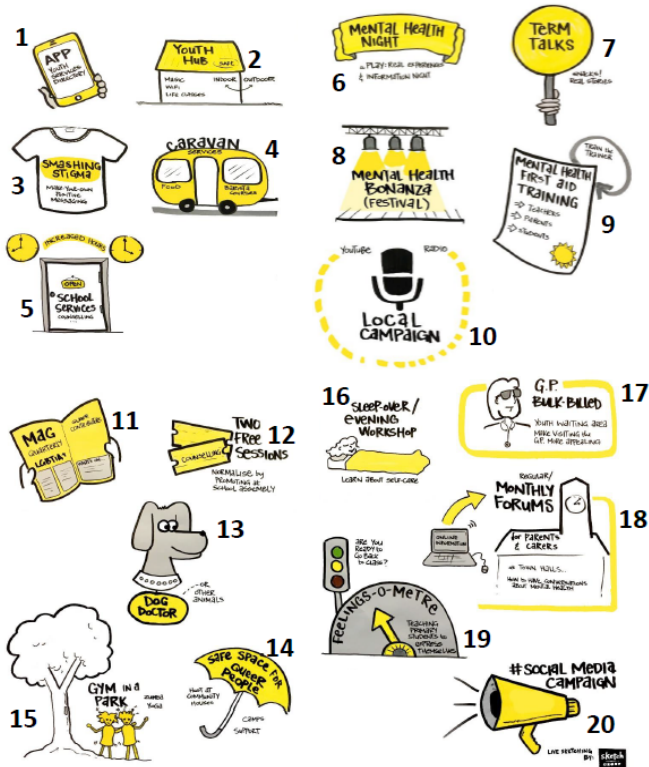
Dave Richardson, Chair of the Loddon Campaspe Regional Partnership, explains that youth input and co-design were important for the success of the project.

The forums resulted in some great new ideas – from free counselling sessions to a mental health festival. The ideas were captured graphically.

Following further consultation, a number of the ideas have been developed further, with constant input from young people. A Keep In Touch (KIT) van is currently being designed and fitted out with input from young people from the region.

Later this year, it will be out and about in Loddon Campaspe, with a social worker and even a BBQ on board, promoting positive mental health messaging.

An app is also being developed which will let young people know when the KIT van is in town and will also include a directory of local services young people can access.





Next steps

With clear long-term priorities identified in the Outcomes Roadmap, the Loddon Campaspe Regional Partnership is now entering a new phase.

The Partnership will continue much of its existing work, including developing a Digital Plan for the region.

But, over the next year, rather than holding a large-scale Regional Assembly as in previous years, the Partnership will undertake more focused, deep-dive engagements with key stakeholders in a small number of priority areas.

These areas will be:

- **Under participation of young people in the workplace**
- **Opportunities for innovation and collaboration in Agri Business.**

Each matches with the Partnership's long term priorities.

The Partnership is already running an online consultation for young people at www.voiceofouryouth.com.au

These engagements will bring together the key players from our region, and elsewhere, to understand the issues and how they affect Loddon Campaspe.

It will lead to further focusing of effort to enable real change on the ground.



Who we are and how to find us

The Loddon Campaspe Regional Partnership is one of nine Regional Partnerships working across the state. Each was established by the Victorian Government in 2016.

The Partnership's newly appointed Chair is Dave Richardson, who is Manager of Partnerships at Deakin University. He has been a Regional Partnership member since its formation.

Joining him on the Partnership are nine other community and business members, as well as the CEOs of each of the Loddon Campaspe Local Government Areas (LGAs), a Victorian Government Deputy Secretary, and a representative of Regional Development Australia (RDA), ensuring local, state and Commonwealth Government involvement in the Partnership.

You can find more information on the LC Partnership on our webpage, <https://www.rdv.vic.gov.au/regional-partnerships/loddon-campaspe> and you can follow us on Facebook, <https://www.facebook.com/LoddonCampaspeRP/>